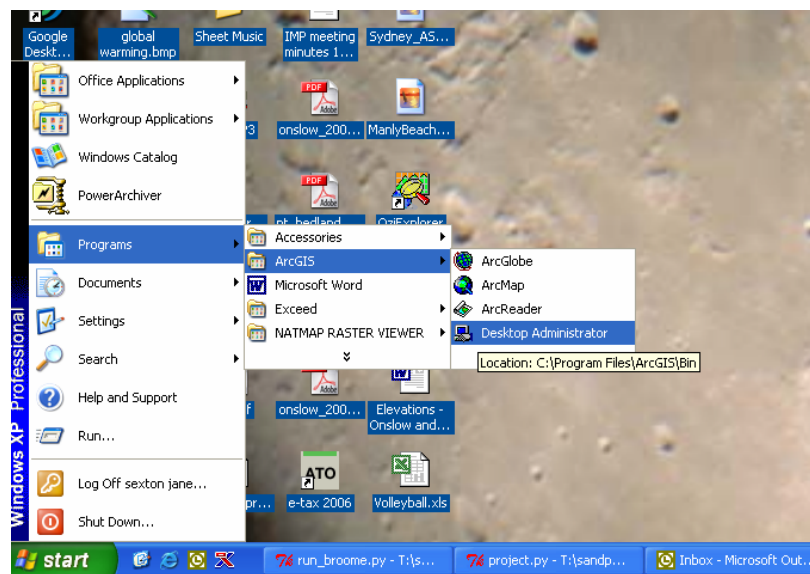


Working with polygons and ASCII grids in ArcGIS

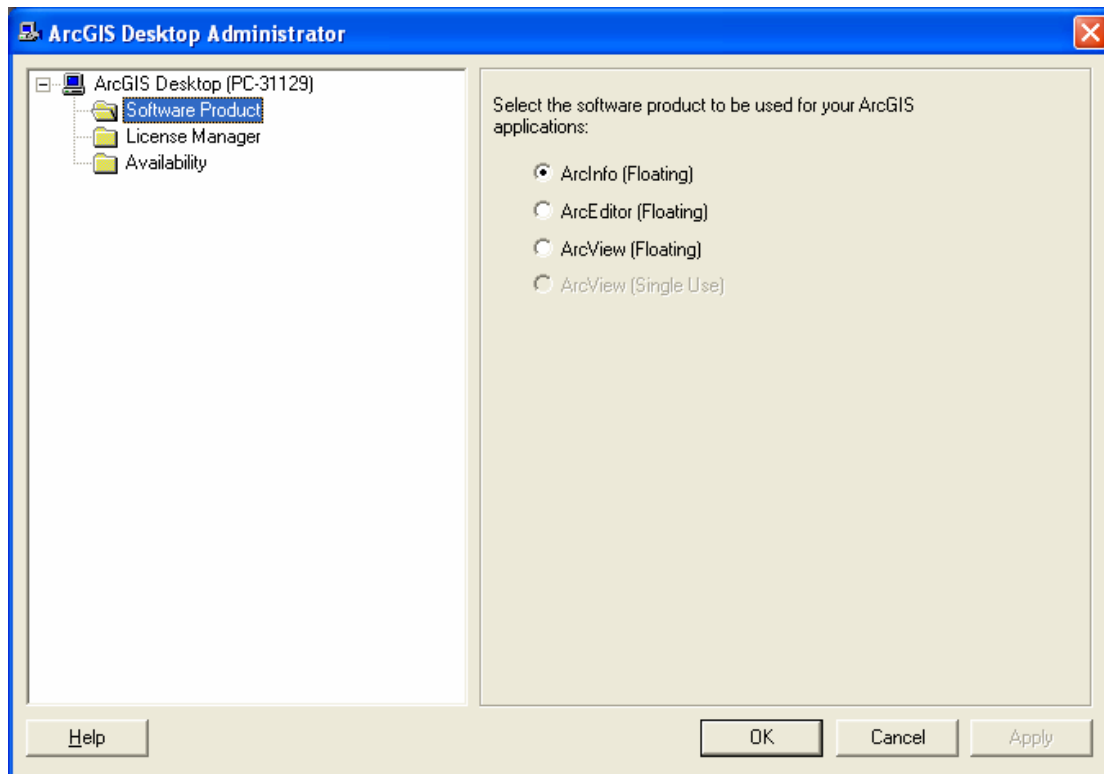
How to develop a polygon for scenario models	1
How to modify a polygon for scenario models	9
How to import points (which may define a polygon)	9
How to import .asc grid (output from ANUGA)	9
How to show depth values onshore and not offshore	10

How to develop a polygon for scenario models

- Change ArcGIS Licence to ArcInfo by going to Desktop administrator in the ArcGIS program list (see below)

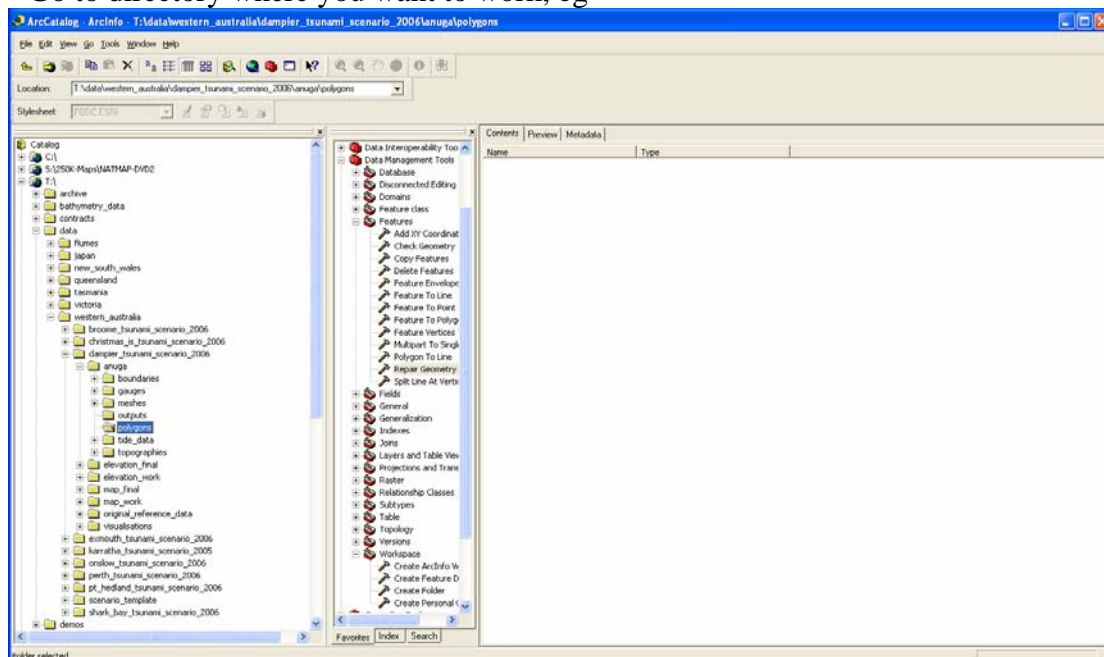


- Select ArcInfo as follows

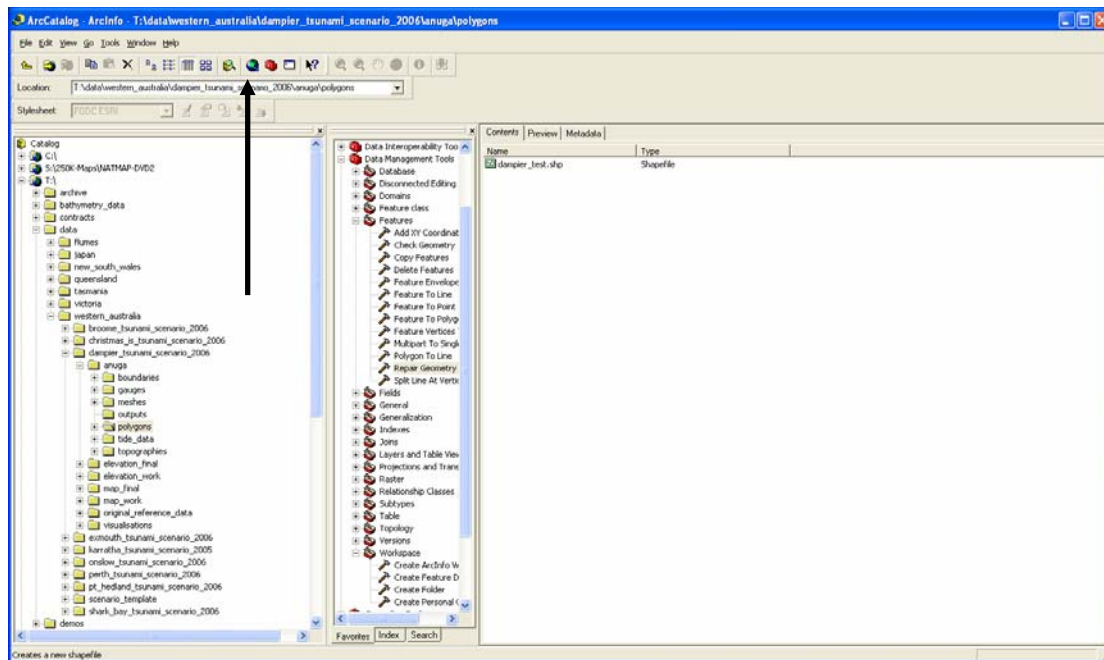


this will allow specific tools to be available.

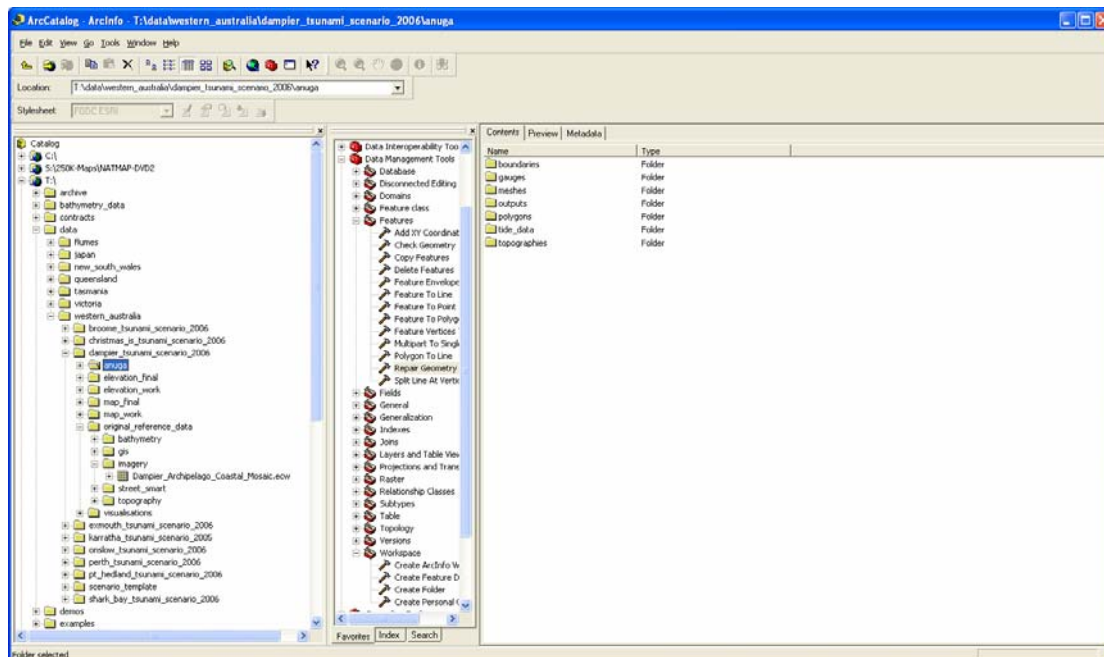
- Load ArcCatalog
- Go to directory where you want to work, eg



- Right click on directory name and select New Shapefile

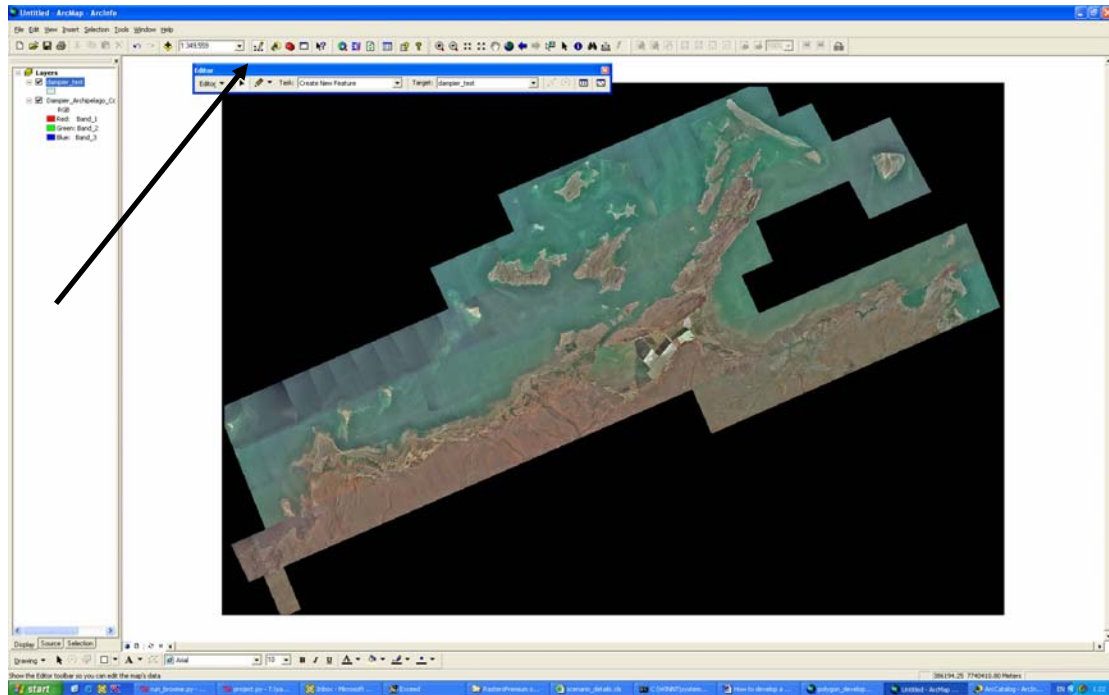


- Right click on the “Layers” and select Properties. On the “Coordinate System” dialogue box, select the “Predefined” box and select the coordinate system in the same way as above.
- Return to ArcCatalogue and drag your newly created shapefile to ArcMap.
- Return to ArcCatalogue and find relevant imagery. Using structure for tsunami scenarios, then imagery should be found in original_reference_data (see below)

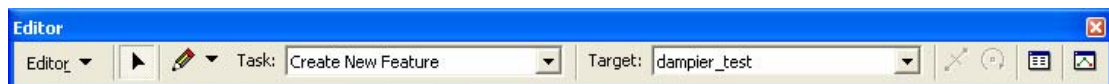


- Drag image into ArcMap session.

- If image isn't available, then you can find a 250K-Map from [\\perlite\geo\2\archive\topo_thematic\raster\2005\premium\250K-Maps](http://perlite.geo/2/archive/topo_thematic/raster/2005/premium/250K-Maps) BUT it will have to be re-projected and probably best if get Alex or Hamish to do this!
- Now to create your polygon:
 - Select Editor on the Toolbar

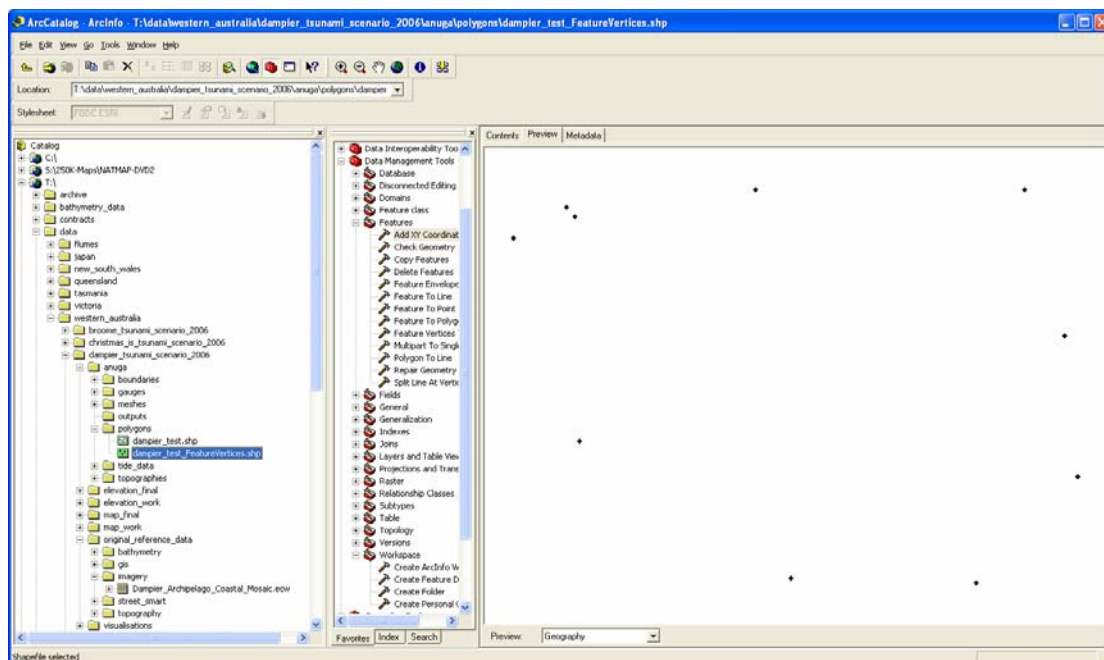


this brings up the Editor

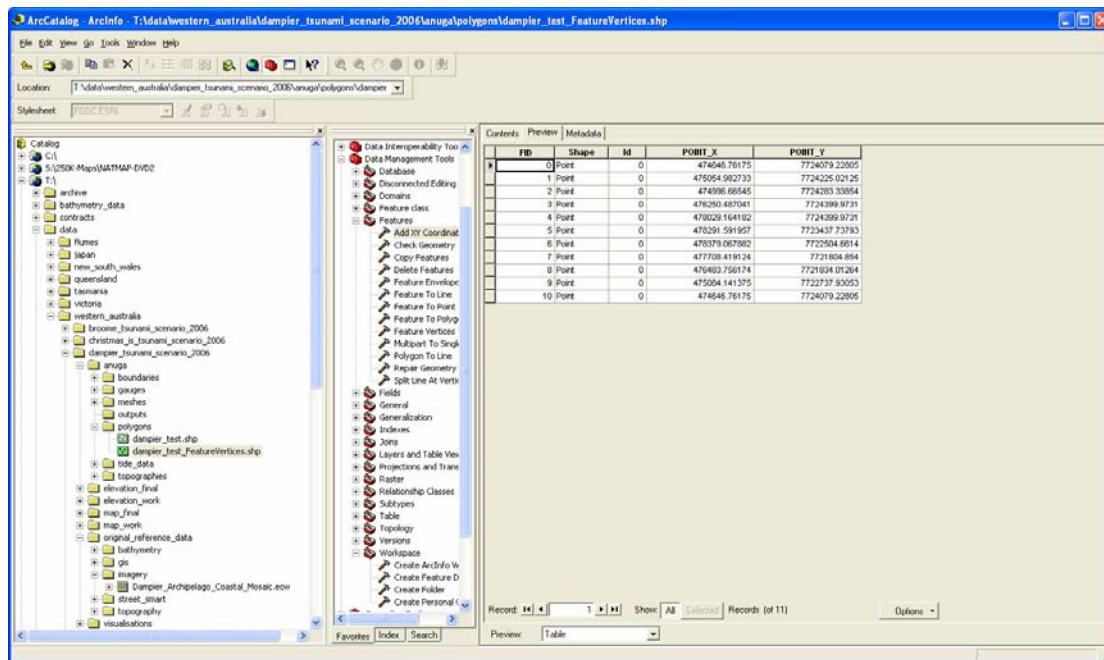


- We want to Create New Feature from the dampier_test (the name given to our shapefile). If there are more shapefiles, they will be available in the Target drop down list.
- You can now start “drawing a polygon” by clicking on the pencil. Throughout drawing, you can zoom in and out, just select the pencil again to keep drawing.
- Double click when you're happy. Go back to the Editor drop down list and select “Save Edits” then “Stop Editing”
- Right click on the dampier_test in the left hand bar and select “Properties” to change the colour and transparency, etc.
- Now you have a polygon shapefile!!!
- Next, return to ArcCatalogue to where your shapefile resides.

- Click on the red toolbox in the toolbar. Go to “Data Management Tools”, then “Features” and double click on “Feature Vertices to Points”.
- Drag your shapefile into the “Input Features” and hit OK. You will see the creation of another shapefile in the same directory (it will be called NAME_FeatureVertices.shp)
- Return to the toolbox and double click on “Add XY Coordinates” and drag the second shapefile into the “Input Features”.
- Click on the second shapefile (NAME_FeatureVertices.shp) and select the Preview tab (see below)

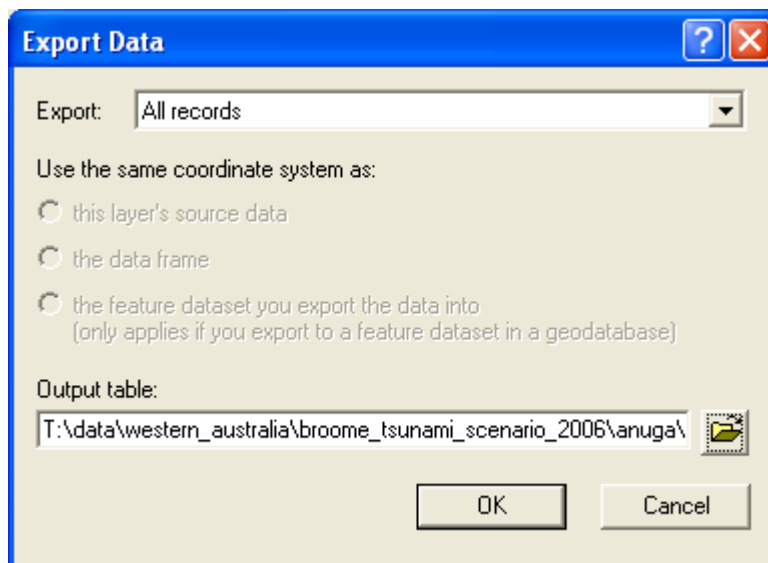


On the bottom of the left hand screen, select “Table”

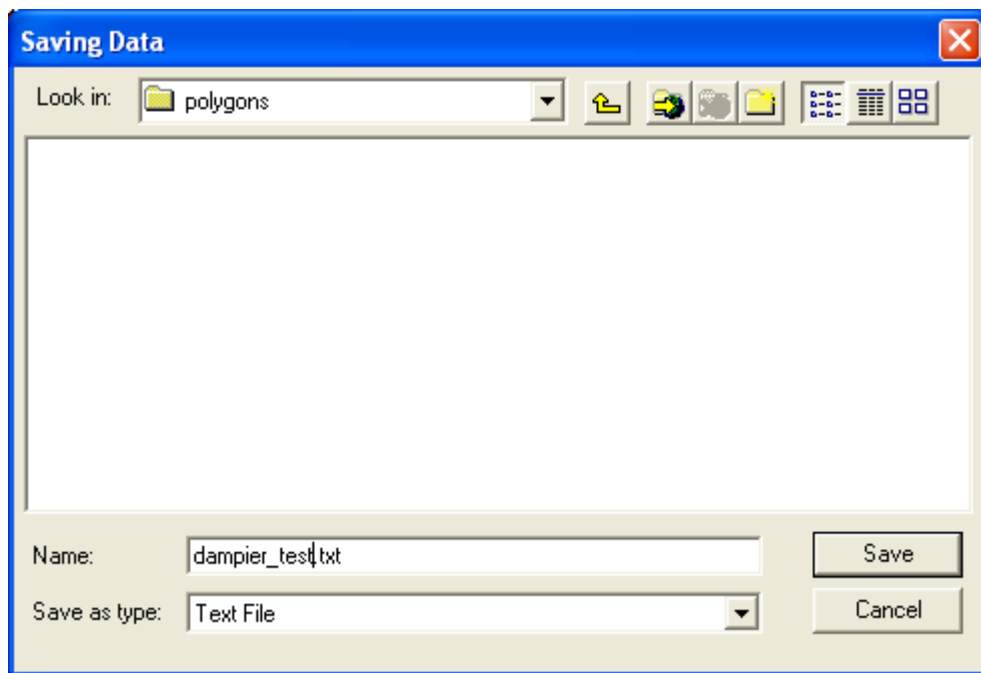


Next, select “Options” then “Export”.

Save to a text file by selecting the folder option



and saving into the polygon directory in the scenario you’re running as a text file.



Next, load into Excel and save as an .csv (after deleting the first two columns and first row).

One thing to remember is that these polygons are defined as closed in ArcGIS, so remove the last line so there are no duplicate points.

Welah!

P.S. Return the ArcGIS Licence to ArcView (ArcInfo is the top notch one).

How to modify a polygon for scenario models

- In “Editor” mode in ArcMap, select target polygon of interest.
- Select “Modify Feature” in Task pull down list in Editor toolbar.
- In “Selection” on the main menu list, choose “Set Selectable Layers”
- Choose “Clear All” then select polygon of interest.
- Click on the polygon and the vertices should appear. You can now move vertices, add vertices etc.
- Then follow procedure as above to export to x, y coordinates.

How to import points (which may define a polygon)

Requirements: text file (.txt), comma separated with header information. For example
x,y
1,10
2,5
etc

- In ArcMap, select “Add XY data” in Tools menu.
- Import text file from appropriate location
- Add coordinate system
- Point data should now appear in ArcMap
- Create a shape file of this data by right clicking on file name in Display section, select “Data” and “Export Data”

How to import .asc grid (output from ANUGA)

- In ArcCatalogue, select “ASCII to Raster” tool (Choose Red Toolbox and search for “ASCII to Raster”)
- Input relevant asc output and select output type to be Floating Point
- Define the projection by selecting “Define Projection” tool and drage in created raster (Use Red Toolbox again)
- Drag created raster into ArcMap

How to show depth values onshore and not offshore

- Select “Tools” then “Extensions” in main menu
- Ensure “Spatial Analyst Tool” is enabled (see below)
- Select “Extract by Mask” tool (Use Red Toolbox again)
- Drag required raster for Input
- Drag shapefile from Alex (talk to him about which clip is appropriate)
- Provide an output name
- Drag raster output into ArcMap!

