

This data represents a composite of the best-available bathymetry and topography for Dampier as of October 2006. The data is designed to be used in ANUGA for the purposes of nearshore tsunami inundation modelling.

DATUMS

All data was reprojected and adjusted to;

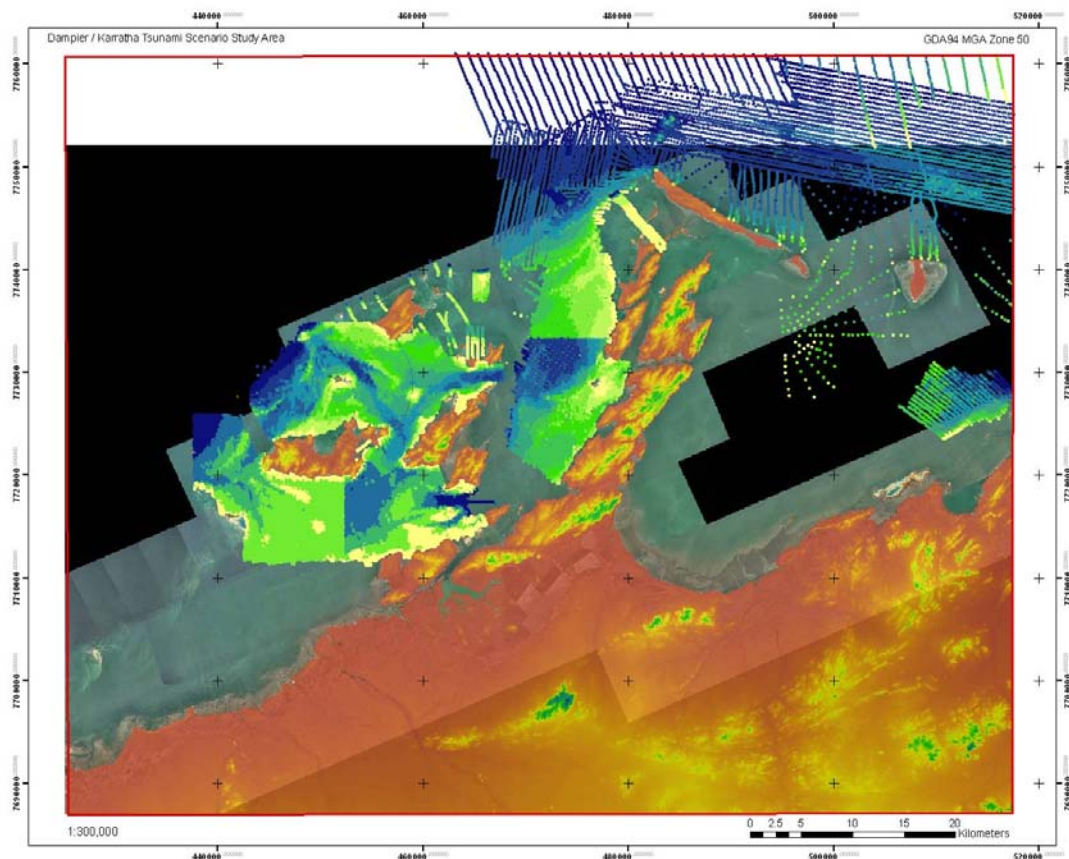
Horizontal: Geocentric Datum of Australia 1994 (GDA94),
Transverse Mercator
Map Grid of Australia (MGA) Zone 50

Vertical: Australian Height Datum (AHD)

Horizontal bounding coordinates:

In decimal degrees;	West:	116.279882
	East:	117.167728
	North:	-20.248614
	South:	-20.917505

In projected or local coordinates;	Left:	425115.673962
	Right:	517441.347425
	Top:	7760844.501819
	Bottom:	7686982.272034



Onshore Data

Department of Land Information (Western Australia)

Paul.Duncan@dli.wa.gov.au Tel: 08 9273 7153

1. File Name: Raw_Dems_z50.ers

Abstract: This 20m merged DEM data has been generated from a wide range of projects and photoscales for the purpose of orthophoto production. As such there are a lot of random errors which have not been edited out, as they have no effect on ortho generation.

RAW UNEDITED DEM METADATA

DEM information is RAW and UNEDITED and not suitable for reliable ground level readings. DEM is NOT EDITED for surface features such as buildings, vegetation clusters, or other non ground level surface features that may give erroneous ground height / contour readings.

DEM CANNOT BE USED FOR PRECISION MEASUREMENT, PLANNING, MODELLING ETC AND IS SUBJECT TO LIMITED DISTRIBUTION ON THIS CONDITION ONLY.

Resolution: 20m

Horizontal Datum: Geocentric Datum of Australia 1994 (GDA94)

Grid coordinates: (Universal Transverse Mercator, using the GRS80 ellipsoid), Map Grid of Australia 1994 (MGA94), Zone 50

Accuracy +/- XYZ (m): 10m (90% of points) within project area

2. File Name: DTED Level 2 CARTO

Tiles: E116 (S21, S22, S23, S24)
E117 (S21, S22, S23, S24)

Digital Terrain Elevation Data (DTED) Level 2

Summary:	A uniform matrix of terrain elevation values, which provides basic quantitative data for military systems that require terrain elevations, slope, and/or surface roughness information. Level 2 post spacing is 1 arc second (approximately 30 metres)
Product Specifications:	MIL - D - 89020, Digital Elevation Terrain Data Level 2, 26 February 1990. DMA Product Specifications for Digital Terrain Elevation Data Level 2, Second Edition, April 1986 (PS/1CD/200).
Data Density:	The information content is approximately equivalent to a 1:50 000 scale resolution. Exploitation at larger scales must consider each individual cell's accuracy evaluation.
Coordinate System:	World Geographic Reference System (GEOREF).
Datums: Vertical: Horizontal:	Australian Height Datum (AHD), World Geodetic System 1984 (WGS84)
Content:	Each cell header record provides identification, administrative data, and information (parameters) required for the application, maintenance, and verification of the elevation values. Each elevation data record contains 3601 elevation values (metres) along a single meridian. A cell will have 630 to 3601 elevation values depending on the appropriate latitude zone. In all of the five latitude zones, the latitude spacing of elevation values is 1 arc second.
Format:	ASCII labelled variable length records.
Standard File Size:	1 degree by 1 degree geographic cell identified by its southwest corner attributes.
Accuracy:	Objectives are; Absolute Horizontal: 50m circular error at 90% Absolute Vertical: ± 30 m linear error at 90%

http://www.defence.gov.au/digo/Products/Digital_Products/ProductsDTED2.htm

Offshore Data

Royal Australian Navy (Australian Hydrographic Office)

Mark.Bolger@defence.gov.au Tel: 02 4221 8590

Fairsheet Survey: The following metadata is made available by the Australian Hydrographic Office, and the Australian Spatial Data Directory (ADSS) initiatives. Fairsheets are the final plot of a Hydrographic survey plotted from correct data and representing the official permanent record of that particular survey.

The metadata for the Fairsheet surveys found to be within the Dampier Scenario extent polygon are provided below;

APPROACHES TO DAMPIER ARCHIPELAGO and PORT WALCOTT
SHEET 2 (Fairsheet)

<http://www.hydro.gov.au/asdd/source/ANZCW0099023695.html>

APPROACHES TO DAMPIER ARCHIPELAGO and PORT WALCOTT
SHEET 3 (Fairsheet)

<http://www.hydro.gov.au/asdd/source/ANZCW0099023696.html>

APPROACHES TO PORT HEDLAND SHEET 9 (Fairsheet)

<http://www.hydro.gov.au/asdd/source/ANZCW0099023645.html>

MERMAID STRAIT - WESTERN SHEET (Fairsheet)

<http://www.hydro.gov.au/asdd/source/ANZCW0099023575.html>

PORT DAMPIER - PRE-DREDGING SOUNDINGS - SHEET 1 (Fairsheet)

<http://www.hydro.gov.au/asdd/source/ANZCW0099024130.html>

PORT DAMPIER - PRE-DREDGING SOUNDINGS - SHEET 2 (Fairsheet)

<http://www.hydro.gov.au/asdd/source/ANZCW0099024131.html>

PORT DAMPIER - PRE-DREDGING SOUNDINGS - SHEET 3 (Fairsheet)

<http://www.hydro.gov.au/asdd/source/ANZCW0099024132.html>

PORT DAMPIER - PRE-DREDGING SOUNDINGS - SHEET 4 (Fairsheet)

<http://www.hydro.gov.au/asdd/source/ANZCW0099024133.html>

PORT DAMPIER - OUTER BAR (Fairsheet)

<http://www.hydro.gov.au/asdd/source/ANZCW0099024134.html>

PORT DAMPIER - CHANNEL EXTENSION (Fairsheet)

<http://www.hydro.gov.au/asdd/source/ANZCW0099024135.html>

SF50- 3 ROEBOURNE (Bathymetric Map)
<http://www.hydro.gov.au/asdd/product/ANZCW0099000150.html>

SF50- 2 DAMPIER (Bathymetric Map)
<http://www.hydro.gov.au/asdd/product/ANZCW0099000149.html>

MERMAID SOUND BATHYMETRY
<http://www.hydro.gov.au/asdd/source/ANZCW0099024046.html>

MERMAID SOUND BATHYMETRY
<http://www.hydro.gov.au/asdd/source/ANZCW0099024045.html>

AREA WEST OF BEZOUT ISLAND
<http://www.hydro.gov.au/asdd/source/ANZCW0099024099.html>

MERMAID STRAIT EASTERN SHEET
<http://www.hydro.gov.au/asdd/source/ANZCW0099023576.html>

MERMAID STRAIT - WESTERN SHEET
<http://www.hydro.gov.au/asdd/source/ANZCW0099023575.html>

DAMPIER (Fairsheet)
<http://www.hydro.gov.au/asdd/source/ANZCW0099022728.html>

SG007 Fairsheet Surveys

SG007 Fairsheet surveys were also used in compiling the Dampier scenario. Little metadata is known about these because they were provided to RAN with a licence agreement.

Locality:	Western Australia
Title:	Dampier
Surveyor:	Australian Survey Office Western Australia
Restrictions:	Not for Navigation
Classification:	Unrestricted
Survey ID:	WA 2016-53
Geodetic Datum:	AGD66
Coordinate System:	Geographic
Grid System:	AGD zone 50, central meridian 117
Projection:	Transverse Mercator

Hydrographic Office Barcodes:	100012103 (ID # 3798)
	100012104 (ID # 3799)
	100012105 (ID # 3800)
	100012106 (ID # 3801)